

Gathering scientific support for regenerative practices in refugee camps

Key points for starting a working group

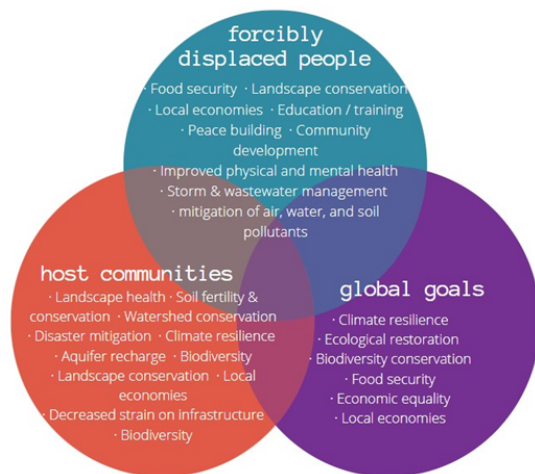
Draft as of 02/16/2022

The problem

Today, some 6.6 million forcibly displaced people are in refugee camps. As a result of their crisis-mode origins, these camps were not designed to provide the long-term health, economic, social and environmental structures and benefits of cities, nor do they sufficiently take into account the opportunities and vulnerabilities of the surrounding landscape. Their subsequent longevity has therefore resulted in severe human and environmental costs, both to the host communities and to the refugees who call these camps home.

The solution

Regenerative practices like ecosystem restoration, green infrastructure design, permaculture and holistic gardening could contribute widely to improving the situation of *forcibly displaced people*, benefiting *host communities*, and addressing *global goals*.



However, regenerative practices are not yet widely adopted. In part, this may be due to the lack of evidence-based support for, and economic valuation of, the full range of ecosystem services provided by green infrastructure and regenerative practices within a displacement context. Scientific evaluation could help garner support from international organizations and funders. The development of a locally-adaptive best practices guide may further support potential projects.

Left: Potential benefits of regenerative practices

Goals of the working group:

- Bridge the gap between permaculture and scientific discourses
- Review existing research and on-the-ground experience to develop best practices
- Create a guideline and/or decision tree for refugee/IDP camp planning that can be tailored to local needs & realities
- Tie camp regenerative practices to the protection and conservation of local natural resources (such as aquifers, watersheds, vegetation, soils, and wildlife)
- Tie camp regenerative practices to the protection and conservation of on-site resources and vulnerable areas (such as hill slope soil stabilization, flooding mitigation)
- Tie camp regenerative practices to an array of well-established human wellness benefits
- Provide organisations with a menu of criteria and indicators that can be utilized to monitor and re-evaluate project progression and quantify project success for funders
- Collaborate with stakeholders to address obstacles to implementation

Mode of operation:

- International working group (volunteering)
- Video calls
- Public (online) discussion of interim results
- Start: Tuesday, 8th of March 2022, 5pm GMT (10am MST / 6pm CST)
- How to join: Mail to science@genr.world, Subject: Join working group